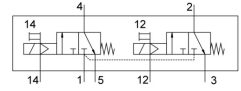


Air solenoid valve

VUVS-LT25-T32C-MZD-G14-F8-1B2

FESTO

Part number: 8035200



Data sheet

Feature	Value
Valve function	2x3/2, closed, monostable
Actuation type	Electrical
Valve size	26.5 mm
Standard nominal flow rate	1000 l/min
Pneumatic working port	G1/4
Operating voltage	24V DC
Operating pressure	-0.9 bar ... 10 bar
Structural design	Plate seat
Reset method	Mechanical spring
Certification	c UL us - Recognized (OL)
Degree of protection	IP65 With plug socket as per IEC 60529
Nominal width	6.9 mm
Type code	VUVS
Exhaust air function	With flow control option
Sealing principle	Soft
Mounting position	Any
Manual override	Detenting Non-detenting
Type of control	Pilot-controlled
Pilot air supply port	External
Flow direction	Non-reversible
Symbol	00995863
Lap	Underlap
Pilot pressure	2.5 bar ... 10 bar
b-value	0.4
C value	4.5 l/sbar
Switching time off	25 ms
On switching time	10 ms
Duty cycle	100%
Max. positive test pulse with 0 signal	2000 µs
Max. negative test pulse on 1 signal	3600 µs
Coil characteristics	24 V DC: 3.3 W
Permissible voltage fluctuations	+/- 10 %
Operating medium	Compressed air as per ISO 8573-1:2010 [7:4:4]

Feature	Value
Information on operating and pilot media	Operation with oil lubrication possible (required for further use)
Vibration resistance	Transport application test with severity level 2 as per FN 942017-4 and EN 60068-2-6
Shock resistance	Shock test with severity level 2 as per FN 942017-5 and EN 60068-2-27
Corrosion resistance class (CRC)	2 - Moderate corrosion stress
Temperature of medium	-5 °C ... 60 °C
Pilot medium	Compressed air as per ISO 8573-1:2010 [7:4:4]
Ambient temperature	-5 °C ... 60 °C
Product weight	415 g
Electrical connection	Form B As per industrial standard (11 mm)
Type of mounting	Optionally: On terminal strip With through-hole
Venting hole connection	Not ducted
Pilot exhaust air port 82	M5
Pilot exhaust air port 84	M5
Pilot air port 12	M5
Pilot air port 14	M5
Pneumatic connection 1	G1/4
Pneumatic connection 2	G1/4
Pneumatic connection 3	G1/4
Pneumatic connection 4	G1/4
Pneumatic connection 5	G1/4
Note on materials	RoHS-compliant
Seals material	HNBR NBR TPE-U(PU)
Housing material	Die-cast aluminum Painted
Material of screws	Steel, galvanized